

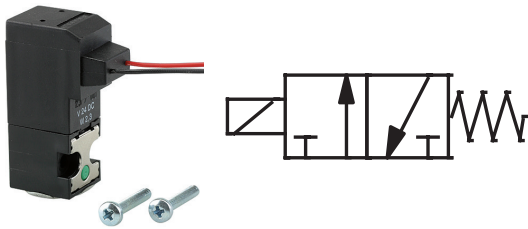
3/2-way mini solenoid valve

3/2-way type

PLUS ||

Art. No. 106642

Type No. MV 1051.2



Exemplary illustration

Directly controlled 3/2-way solenoid valves specially designed for pneumatic applications. These valves are provided with a flange for assembly on an individual base or multiple manifold base. They feature a monostable manual operator. The scope of supply includes two fixing bolts and a flange gasket. The coils can be turned 180°.

Technical data

Operating pressure	0 - 7 bar
Temperature range	-10 to 50 °C
Material	Plastic
Sealant	NBR, stainless steel
Type of construction	directly controlled
Connection	Cable (30 cm)
Function	3/2 NC
Operation	electric with manual control
Plate on manual operator	Silver
Applications	For assembly on manifold base
Manual control	non-latching
Medium	Filtered, unlubricated compressed air
Nominal Ø	1.5 mm
Flow rate	QN (p1 = 6 bar, Δp = 1 bar) = 50 NI/min
Switching frequency	max. 2400/min
Lifetime	50 million switching operations
Voltage	24 V DC
Voltage fluctuation max. permissible	-5% / +10%
Protection IP	IP 65
Power input	2.5 W
Opening and closing times	10 to 12 ms (depending on pressure)
Width	15.0 mm
Height	42.0 mm

Important: The scope of supply does not include a connector. Please order separately.

Commercial data

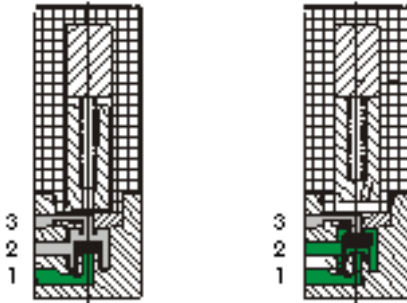
Customs tariff number	84812090
Country of origin	IT
eCl@ss 5.1.4	27220601
eCl@ss 9.0	27220601
UNSPSC_Code_v190501	40141605
UNSPSC_CodeDesc_v190501	Solenoid valves

Materials

Part	Material
Body	PA
Seals	NBR
Manifold base conn. surface	Stainless steel
Fastener	Aluminium
Manifold base	Aluminium

Function diagram

3/2 NC



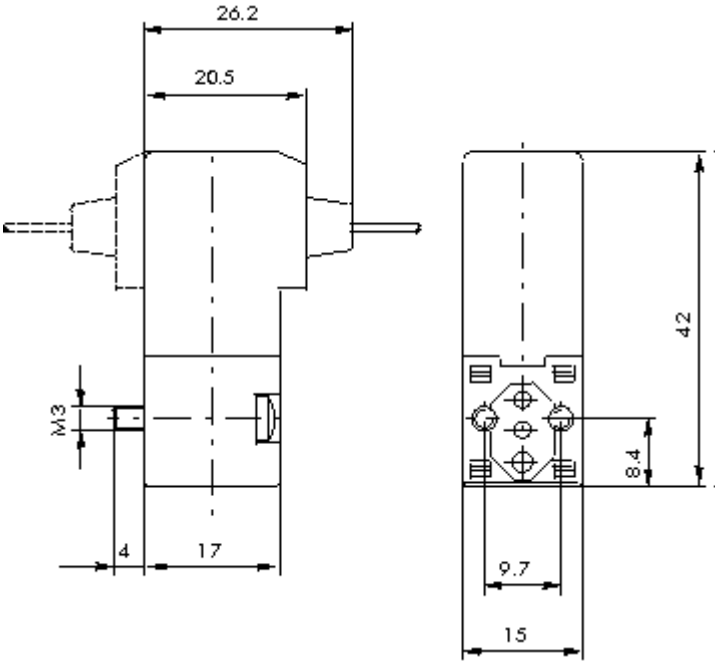
Position 1
(normal position)

Position 2

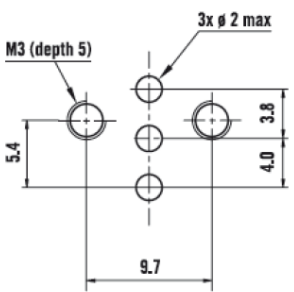
1	Pressure input
2	Application
3	Exhaust air

Dimensions

Cable connection



Connection geometry



Accessories

	Art. No.	Type No.
Individual manifold base, M5	106650	1099.01
Multiple manifold base, 2-ports, M5	106651	1099.02
Multiple manifold base, 3 ports, M5	106652	1099.03
Multiple manifold base, 4 ports, M5	106653	1099.04
Multiple manifold base, 5 ports, M5	106654	1099.05
Multiple manifold base, 6 ports, M5	106655	1099.06
Multiple manifold base, 7 ports, M5	106656	1099.07
Multiple manifold base, 8 ports, M5	106657	1099.08
Multiple manifold base, 9 ports, M5	106658	1099.09
Multiple manifold base, 10 ports, M5	106659	1099.10
Plug conn. f. mini solenoid valve, PG 9 type C, DIN 43650 C	106660	1051.300