

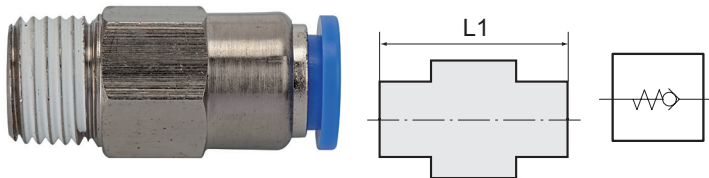
Straight check valve

»blue series«

EASY

Art. No. 110232

Type No. 202.3812



Exemplary illustration

The non-return function of these push-in fittings prevents the air from flowing back, the unidirectional design means air flow is only possible in one direction.

Technical data

Working pressure	0 - 10 bar
Min. opening pressure	0.2 bar
Temperature range	0 to 60 °C
Series	Blue series
Material	Plastic and nickel-plated brass
Medium	Compressed air
Sealant	NBR
Sleeve	Plastic blue
Applications	Compressed air systems
Recommended hose	PU or PA (nylon)
Flow direction	From port to tube
Thread form	Conical male thread
Standard thread	ISO 7-1
Version	Coated
Thread	R 3/8
For tube O.D.	12 mm
L1	42.5 mm
a/f	21 mm

The suitability test for the use with alternative specifications is the user's responsibility.

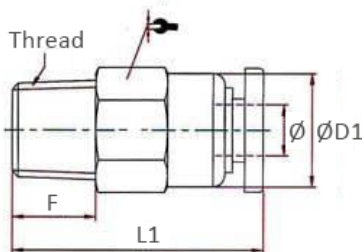
Commercial data

Customs tariff number	39174000
Country of origin	CN
eCl@ss 5.1.4	27292001
eCl@ss 9.0	27292001
UNSPSC_Code_v190501	40141603
UNSPSC_CodeDesc_v190501	Pneumatic valves

Material informations

REACH SVHC1 substance name	lead
CAS no. SVHC 1	7439-92-1
RoHS materials notice	RoHS compliant
REACH Info	contains SVHC substance

Dimensions



Thread	Standard thread	For tube O.D.	F	a/f	L1	D1
		mm	mm	mm	mm	mm
R 3/8	ISO 7-1	12	10.5	21	42.5	20.0