

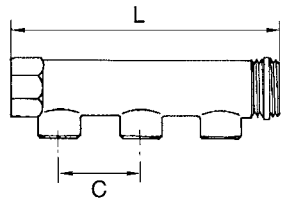
# Distributor pipe

brass



Art. No. 112568

Type No. VT 1227



Exemplary illustration

For assembling compressed air taps.

End fittings with 1 x male and 1 x female thread, outlets optionally with male or female thread.

## Technical data

|                         |                       |
|-------------------------|-----------------------|
| Max. operating pressure | 10 bar                |
| Material                | bright brass          |
| Sealant                 | PTFE                  |
| Inlet thread            | G 1 IT                |
| Connection              | 3                     |
| Connecting thread       | G 1/2 ET              |
| Through-hole thread     | G 1 ET                |
| Version                 | incl. sealing ring ET |
| Tube O.D.               | 31 mm                 |
| L                       | 163.0 mm              |
| C                       | 50.0 mm               |

## Commercial data

|                         |               |
|-------------------------|---------------|
| Customs tariff number   | 84818099      |
| Country of origin       | IT            |
| eCl@ss 5.1.4            | 27294206      |
| eCl@ss 9.0              | 27294206      |
| UNSPSC_Code_v190501     | 27131601      |
| UNSPSC_CodeDesc_v190501 | Air manifolds |

## Material informations

|                            |                         |
|----------------------------|-------------------------|
| REACH SVHC1 substance name | lead                    |
| CAS no. SVHC 1             | 7439-92-1               |
| RoHS materials notice      | RoHS compliant          |
| REACH Info                 | contains SVHC substance |

## Product informations

### Version

- heavy cast brass
- infinitely extendable
- male thread of main pipe with self-sealing PTFE gasket

### Applications

- heating systems
- domestic water supplies
- compressed air supplies, max. 10 bar
- neutral, non-toxic, gaseous and liquid media
- NO drinking water approved