

# Closing cap

Stainless steel 1.4408

**STAINLESS STEEL**

Art. No. 118654

Type No. VKRP12ES4408SK



Exemplary illustration

## Technical data

|                       |                        |
|-----------------------|------------------------|
| Max. working pressure | 20 bar                 |
| Thread                | Rp 1/2                 |
| L1                    | 17.1 mm                |
| a/f                   | 24 mm                  |
| Thread form           | parallel female thread |
| Standard thread       | DIN EN ISO 7-1         |
| Version               | Hexagonal              |

From thread size of 1 inch, we recommend using an adjustable open-end wrench.

To ensure a proper sealing of the cylindrical threads (G) and tapered threads (R/Rp) we recommend using a suitable sealant (e.g. hemp, sealing tape or suitable industrial adhesive).

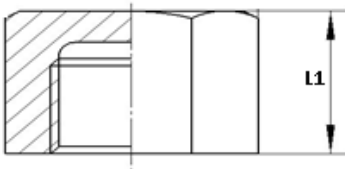
## Commercial data

|                         |                          |
|-------------------------|--------------------------|
| Customs tariff number   | 73072910                 |
| Country of origin       | CN                       |
| eCl@ss 5.1.4            | 22360607                 |
| eCl@ss 9.0              | 22560207                 |
| UNSPSC_Code_v190501     | 40172407                 |
| UNSPSC_CodeDesc_v190501 | Stainless steel pipe cap |

## Material informations

|                            |                            |
|----------------------------|----------------------------|
| REACH SVHC1 substance name | no                         |
| CAS no. SVHC 1             | no CAS No.                 |
| RoHS materials notice      | RoHS compliant             |
| REACH Info                 | no SVHC substance included |

## Dimensions



| Thread | L1<br>mm | a/f<br>mm |
|--------|----------|-----------|
| Rp 1/2 | 17.1     | 24        |

From thread size of 1 inch, we recommend using an adjustable open-end wrench.

To ensure a proper sealing of the cylindrical threads (G) and tapered threads (R/Rp) we recommend using a suitable sealant (e.g. hemp, sealing tape or suitable industrial adhesive).