

## Bushing

Stainless steel 1.4408

**STAINLESS STEEL**

Art. No. 119403

Type No. MUG1ES4408K



Exemplary illustration

### Technical data

Max. working pressure	20 bar
Thread	G 1
L1	19.9 mm
Thread form	parallel female thread
Standard thread	DIN EN ISO 228-1
Version	round, short type

From thread size of 1 inch, we recommend using an adjustable open-end wrench.

To ensure a proper sealing of the cylindrical threads (G) and tapered threads (R/Rp) we recommend using a suitable sealant (e.g. hemp, sealing tape or suitable industrial adhesive).

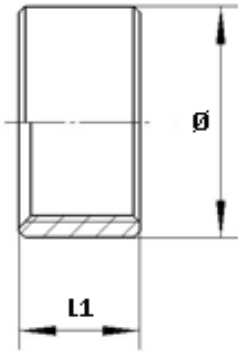
### Commercial data

Customs tariff number	73072210
Country of origin	CN
eCl@ss 5.1.4	22360605
eCl@ss 9.0	22560205
UNSPSC_Code_v190501	40172607
UNSPSC_CodeDesc_v190501	Stainless steel pipe coupling

### Material informations

REACH SVHC1 substance name	no
CAS no. SVHC 1	no CAS No.
RoHS materials notice	RoHS compliant
REACH Info	no SVHC substance included

## Dimensions



Thread	L1 mm	Ø mm
G 1	19.9	39.4

From thread size of 1 inch, we recommend using an adjustable open-end wrench.

To ensure a proper sealing of the cylindrical threads (G) and tapered threads (R/Rp) we recommend using a suitable sealant (e.g. hemp, sealing tape or suitable industrial adhesive).