

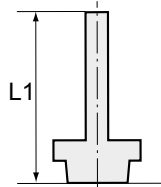
# Thread plug nipple

stainless steel

**STAINLESS STEEL**

Art. No. 135306

Type No. 768.012-12 ES



Exemplary illustration

For use in more aggressive environments and corrosive media.

Only recommended for use in combination with stainless steel quick connectors type 844 ff. Suitability testing for use with other series is the responsibility of the user.

## Technical data

Working pressure	-0.98 - 20 bar
Operating temperature	-20 to 150 °C
Medium temperature	-20 to 150 °C
Material	Stainless steel 1.4404
Medium	Compressed air,corrosive media (if compatible with material)
Sealant	FPM
Applications	Compressed air syst.,chemical and food, pharma, pack.,vacuum
Thread form	Parallel male thread
Standard thread	DIN EN ISO 228-1
Version	With o-ring (FPM)
Thread	G 1/2
L1	44.4 mm
a/f	27 mm
Plug connection	12 mm
Suitable pipe materials	PVDF, PTFE, PA, PU

The suitability test for the use with alternative specifications is the user's responsibility.

Only recommended for use in combination with stainless steel quick connectors type 844 ff.

## Commercial data

Customs tariff number	73072910
Country of origin	IN
eCl@ss 5.1.4	27294201
eCl@ss 9.0	27294201
UNSPSC_Code_v190501	27131613
UNSPSC_CodeDesc_v190501	Air coupling

## Material informations

REACH SVHC1 substance name	no
CAS no. SVHC 1	no CAS No.
RoHS materials notice	RoHS compliant
REACH Info	no SVHC substance included

## Dimensions



Thread	Standard thread	Plug connection	F	a/f	L1
		mm	mm	mm	mm
G 1/2	DIN EN ISO 228-1	12	10.0	27	44.4