

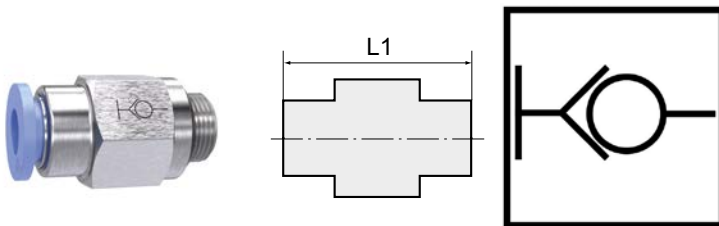
Stopper valve, straight push-in fitting

»blue series«

EASY

Art. No. 151440

Type No. 195.186-2



Exemplary illustration

Functional principle of a coupling: The compressed air supply is completely shut off as soon as the hose is detached from the connector.

Flow is only guaranteed when the hose is firmly inserted.

Attention: Only release the hose without pressure and hold the end of the hose to the plug connection when loosening to prevent injuries from the "whip effect".

Technical data

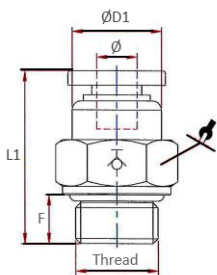
Working pressure	0 - 10 bar
Temperature range	0 to 60 °C
Series	Blue series
Material	Plastic and nickel-plated brass
Medium	Compressed air
Sealant	NBR
Sleeve	Plastic blue
Applications	Compressed air systems
Recommended hose	PU or PA (nylon)
Function	Self-locking
Thread form	Parallel male thread
Standard thread	DIN EN ISO 228-1
Version	With o-ring (NBR)
Thread	G 1/8
For tube O.D.	6 mm
L1	27.5 mm
a/f	14 mm

The suitability test for the use with alternative specifications is the user's responsibility.

Commercial data

Customs tariff number	39174000
Country of origin	CN
eCl@ss 5.1.4	27294201
eCl@ss 9.0	27294201
UNSPSC_Code_v190501	27131613
UNSPSC_CodeDesc_v190501	Air coupling

Dimensions



Thread	Standard thread	For tube O.D. mm	F mm	a/f mm	L1 mm	D1 mm
G 1/8	DIN EN ISO 228-1	6	5.5	14	27.5	12.0

Accessories

	Art. No.	Type No.
Loosening tool, quick-connect fittings, hose exterior Ø 3 - 10 mm	108853	LW3-10
Loosening tool, quick-connect fittings, hose exterior Ø 4-14 mm	121863	LW4-14