

Characteristics

Type	570.12 B	570.12 D
Type of construction	Diaphragm pressure regulator with self-relieving design (reversible)	
	571.12 B	571.12 D
Type of construction	Diaphragm pressure regulator with non-self-relieving design (non-reversible)	
Pipe thread	G 1/2	
Pressure gauge	G 1/4	
Control range	0.5 to 8.0 bar	1.5 to 15.0 bar
	Special versions on request	
	- NPT threads	
Input pressure	Max. 30 bar	Max. 50 bar
Mounting position	Any	
Mounting type	Bracket and nut, hole Ø50.5 mm	
Temperature		
Medium	-20 to 80 °C	
Ambient	-20 to 80 °C	
Weight [g]	2000 / 2150 with pressure gauge	

Materials

Part	Material
Head piece	1.4404 (AISI 316L) 1.4404
Spring bonnet	(AISI 316L) 1.4301
Adjusting screw	PTFE on NBR-carrier
Diaphragm, type 570	PTFE on NBR-carrier
Diaphragm, type 571	1.4404 (AISI 316L) / FKM
Valve cone	FKM
O-rings	

Main spare parts

Designation	Part No.
Repair kit	
- Type 570	22.5702.4
- Type 571	22.5712.4.16
Pressure gauge, 1.4571	
G 1/4, Ø 63	
0 to 10.0 bar	4084
0 to 16.0 bar	4085

Operation

- Stainless steel pressure regulator containing no non-ferrous metals for use in the food processing, chemical, mining, plant construction and special machinery industries
- Suitable for use in medical equipment
- All applications where excellent resistance to corrosion is essential

- **For liquid media → Type 571.12**

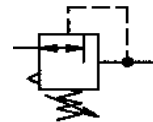
No liability can be accepted if explosive media or media which could be detrimental to health are used

Pressure regulator

Size 2

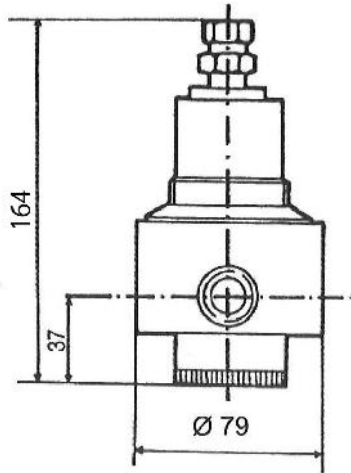
G 1/2

 0.5 to 8.0 bar
1.5 to 15.0 bar

570.12
571.12

Ordering information

Designation	Order No.
Pressure regulator (reversible) with self-relieving design and pressure gauge	
Control range	
0.5 to 8.0 bar	570.12 B
1.0 to 15.0 bar	570.12 D
Pressure regulator with non-self-relieving design (non-reversible) and pressure gauge	
Control range	
0.5 to 8.0 bar	571.12 B
1.0 to 15.0 bar	571.12 D
Accessories	
- Mounting bracket with fixing nut M50 x 1.5	576/3
- Pressure gauge	4084
0 to 10 bar	4085
0 to 16 bar	

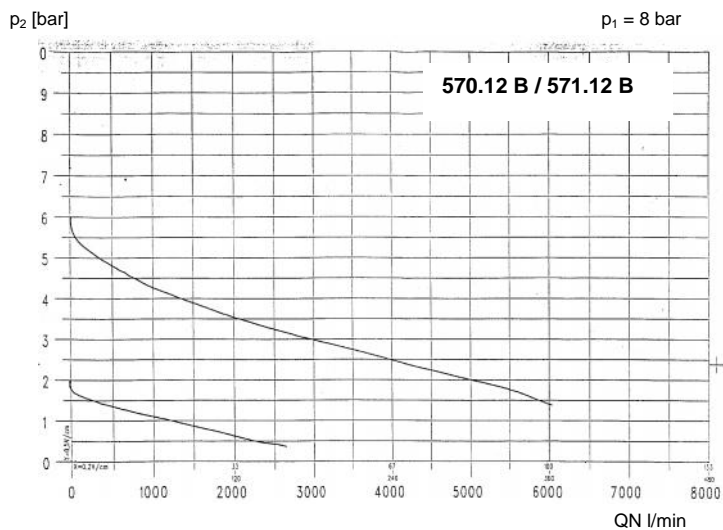
Dimensions [mm]



Type	Press. gauge Ø	Pipe thread G	Pr. gauge port G
570.12 571.12	63	1/2	1/4

Flow rates

Flow characteristic



Hysteresis

