



Pressure regulating valve

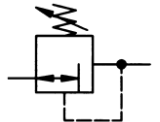
Non-self-relieving

Stainless steel 1.4571

G 1/4

777.301 to 777.303

0.1 to 2.0 bar
0.2 to 6.0 bar
0.5 to 10.0 bar



Characteristics

Type	777.30X
Port	G 1/4
Pressure gauge port	G 1/8
Type of construction	Diaphragm pressure regulator with non-self-relieving design
Mounting position	Any
Input pressure p_1	Max. 25 bar
Output pressure p_2	0.5 to 10.0 bar (standard)
Temperature Ambient / medium	-10 to 80 °C (other temperature ranges on request)
Mounting type	In-line, bracket kit Panel mounting, cutout Ø30.5
Weight [kg]	0.204

Materials

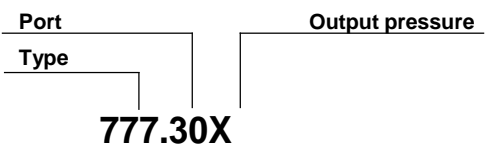
Designation	Material
Head piece	1.4571
Spring bonnet	POM
Diaphragm	FKM
Valve cone	1.4571
Pressure spring	1.4571
Valve seat	1.4571
O-ring 9 x 2	FKM
Counter-pressure spring	1.4571

Important

The valve must not be used as a safety device in conjunction with explosive media and / or media which could be detrimental to health. The user is responsible for ensuring compliance with all relevant regulations and standards.

No liability can be accepted.

Ordering information



Output pressure	
X=	Control range
1	0.1 to 2.0 bar
2	0.2 to 6.0 bar
3	0.5 to 10.0 bar

Operation

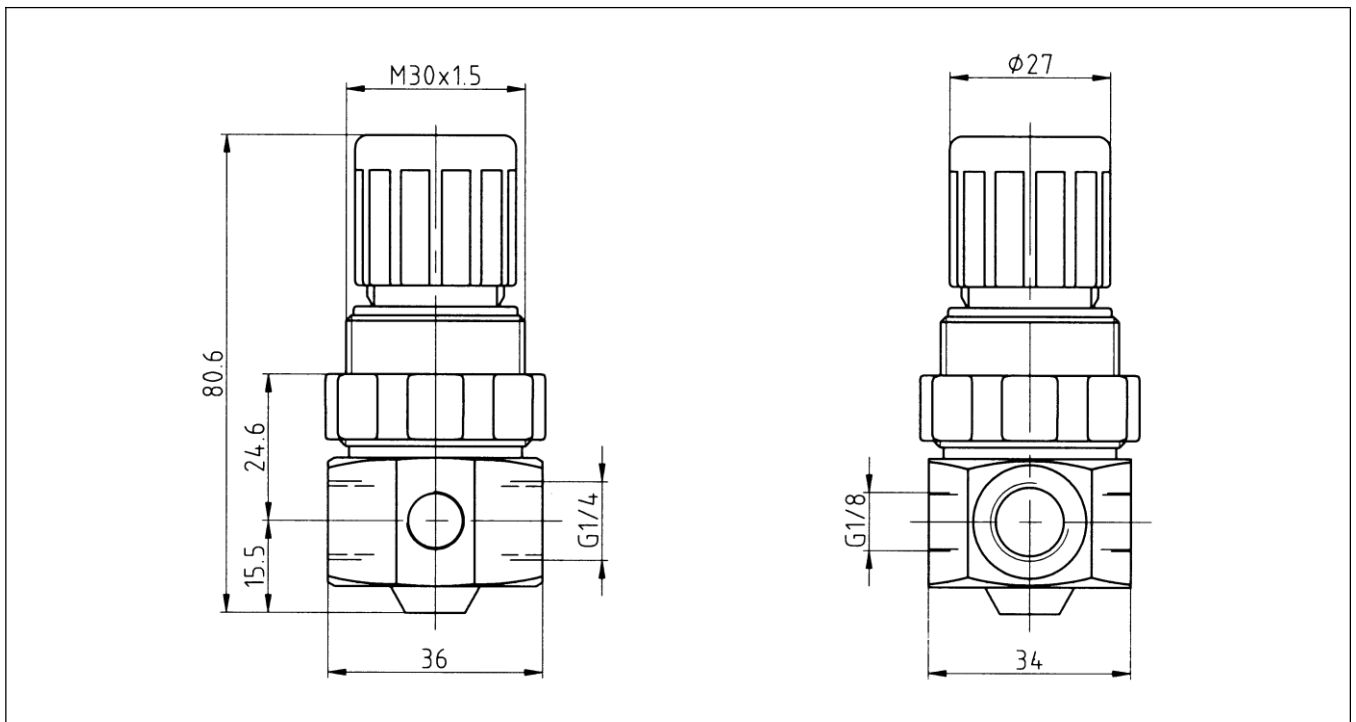
Stainless steel pressure regulating valve, spring bonnet / adjusting knob made of POM

- Can be locked by pushing the knob down
- Pressure gauge **not** included (see "Accessories")

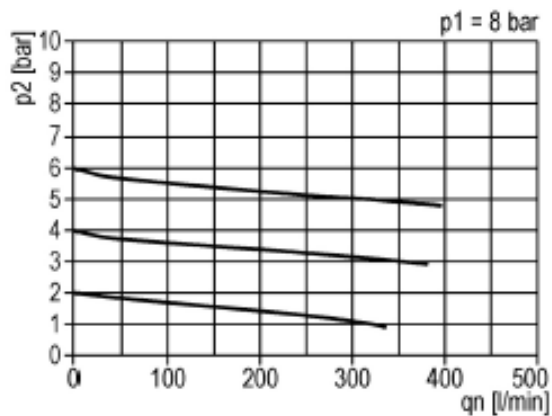
Applications

Stainless steel pressure regulating valve for gaseous and liquid media in the following areas:

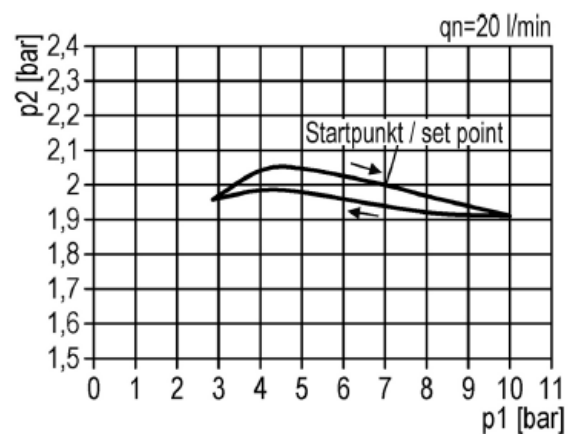
- Food processing, medical equipment, mining and all applications where excellent resistance to corrosion is essential.

Dimensions [mm]

Flow characteristic

Medium: Air

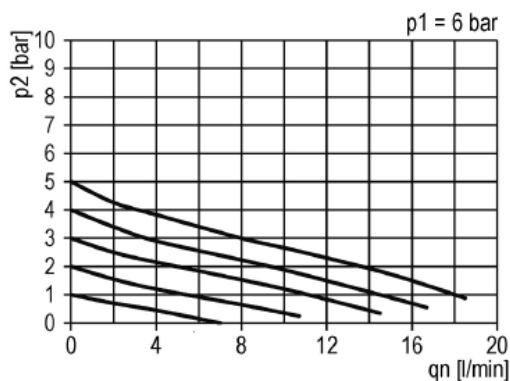

Hysteresis

Medium: Air

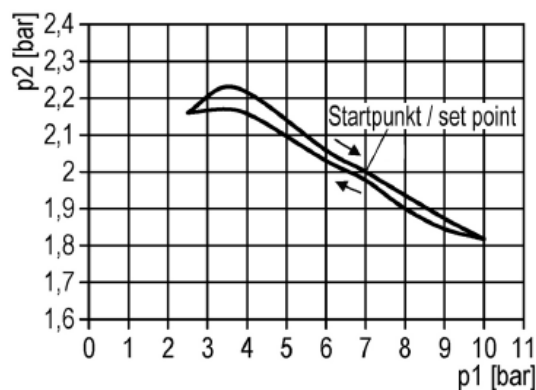


Flow characteristic

Medium: Water


Hysteresis

Medium: Water


Accessories

Designation	Part No.
Mounting kit (bracket: galvanised steel, fixing nut: brass with a bare metal surface)	MV 30
Pressure gauge, Ø 40, G 1/8, 0 to 10 bar	110.46-ES
Pressure gauge, Ø 40, G 1/8, 0 to 2.5 bar	110.43-ES

Main spare parts

Designation	Part No.
Set of wearing parts - Diaphragm, cmpl., FKM - Valve cone, cmpl. - O-ring 9 x 2	22.777.4