



Version with plastic bowl

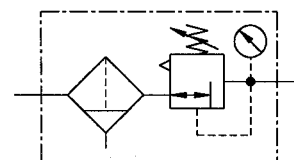
Version with metal bowl

## Filter regulators

Size 1

<b>578.020</b>	<b>578.030</b>
G 1/4	G 3/8

0.5 to 10 bar
0.5 to 16 bar



### Characteristics

Type	578.020	578.030
Port	G 1/4	G 3/8
Pressure gauge port	G 1/4	
Type of construction	Diaphragm pressure regulator with self-relieving design Centrifugal filter Sintered filter element  Special versions on request	
Input pressure $p_1$	Max. 16 bar with plastic bowl Max. 25 bar with metal bowl	
Input pressure $p_1$ with fully-automatic drain	Max. 16 bar Min. 1.5 bar	
Control range $p_2$	0.5 to 10 bar / 0.5 to 16 bar (standard) 0.5 to 3 bar / 0.5 to 6 bar on request	
Mounting position	Vertical, drain plug at bottom	
Mounting type	Bracket	
Medium temperature	-10 to 60 °C (other temperature	
Ambient temperature	-10 to 60 °C ranges on request)	
Filter rating	5 $\mu$ m	
Bowl capacity	Max. 35 cm <sup>3</sup> condensate	
Condensate drain	Manual, semi-automatic Fully-automatic on request	
Weight [g]	660 / 770 with pressure gauge	

### Materials

Part	Material
Head piece (body)	Z 410
Spring bonnet	Z 410-brass
Diaphragm	→ NBR-brass
Pressure spring	Galvanised steel
Valve cone	→ NBR-brass
Counter-pressure spring	Stainless steel
O-ring 37 x 2	→ NBR
Filter element 5 $\mu$ m	Polyethylene
Condensate bowl	Polycarbonate
Baffle	PA

### Ordering information

Type Port Options

**578.0XX X**
**Order example: 578.020 K-HA**

Port	
020	G 1/4
030	G 3/8
021	G 1/4 - $p_2$ : 0.5 to 16 bar
031	G 3/8 - $p_2$ : 0.5 to 16 bar
Options	
K-HA	Plastic bowl
M	Metal bowl
S	Bowl guard

Please use the suffix »A« to order fully-automatic drain

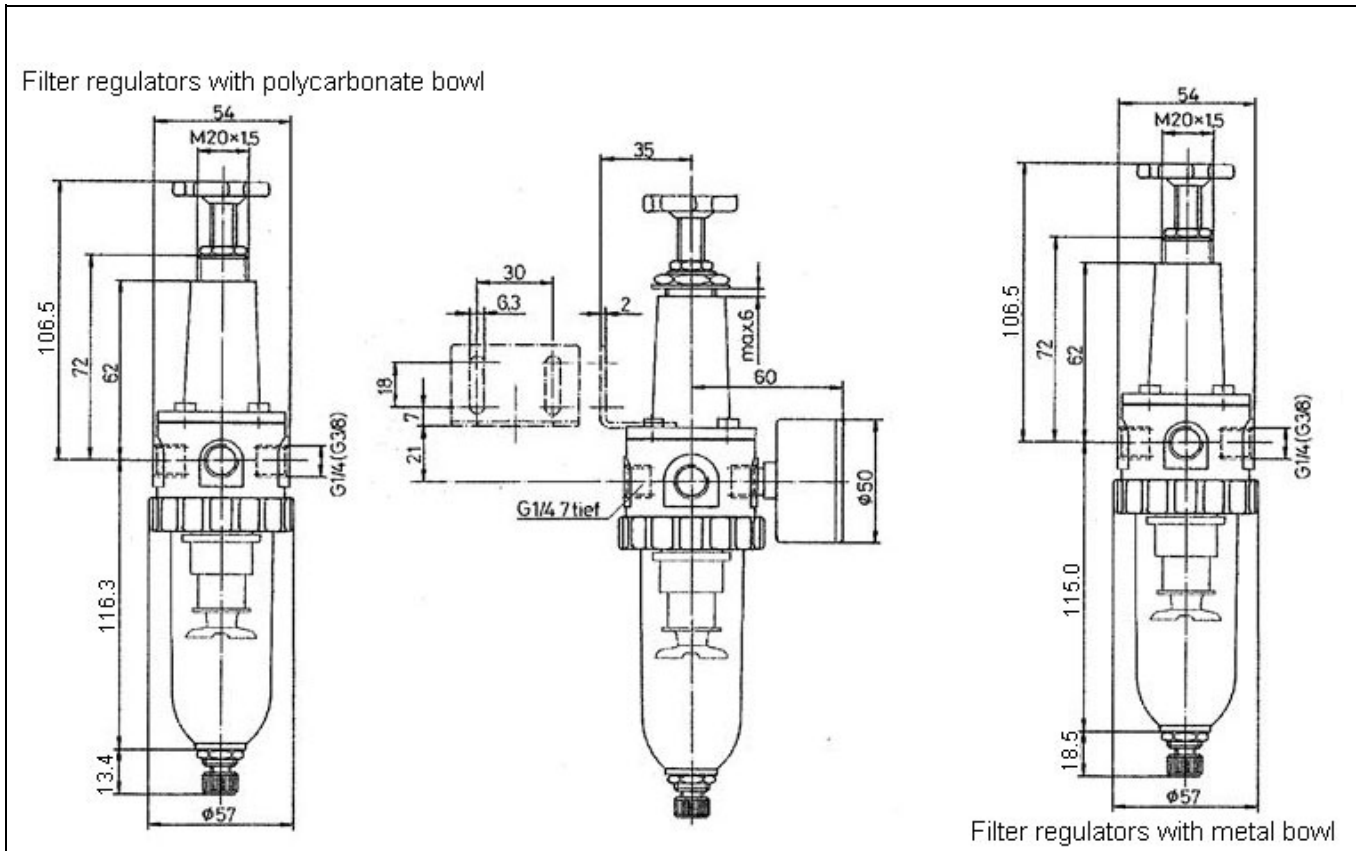
### Description

- Standard design
- Pressure setting can be locked with lock nut on adjusting screw
- Flow direction indicated by arrows
- Entry in direction of arrow
- Independent of inlet pressure
- Pressure gauge  $\varnothing$  50 mm included
- Pressure gauge can be mounted at both ends
- Filter rating acc. to ISO 4003
- Bowl guard can be retrofitted

### Accessories

Designation	Order No.
Nut M 20 x 1.5 and washer	74/1
Mounting bracket with nut and washer	75/1
Fully-automatic drain (external)	65/0-N
Fully-automatic drain (internal)	655.6.900
Bowl guard	SK 01
Filter element 5 $\mu$ m	611.6.905
Plastic bowl	640/2-HA
Metal bowl	640/12

## Dimensions [mm]



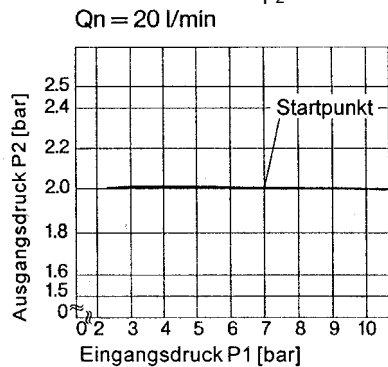
## Flow rates

Flow rates at  $p_1 = 8$  bar

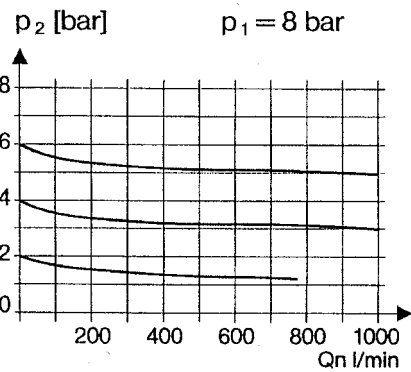
Output pressure $p_2$		6
Nominal flow ( $\Delta p = 1$ bar)	QN	m <sup>3</sup> /h l/min
		54 900

## Hysteresis

Hysteresis of  $p_2$  as a function of rising (falling)  $p_1$  at a constant draw-off rate QN 20 l/min  
 Basic setting (starting point):  $p_1$ : 7.0 bar  
 $p_2$ : 2.0 bar



## Flow characteristic



## Main spare parts

Part	Part No.
→ Set of wearing parts	22.520.4
- Diaphragm	
- Valve cone	
- O-ring 37x2	
Pr. gauge $\varnothing$ 50 mm, G1/4	
0 to 4 bar	204-KD
0 to 6 bar	205-KD
0 to 10 bar	206-KD
0 to 16 bar	207-KD