



Service units, 2-part

Size 1

VW 22

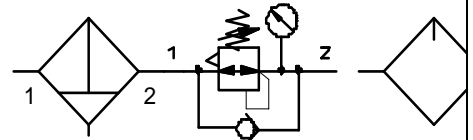
VW 23

G 1/4

G 3/8

0.5...10 bar

40 µm



Characteristics

Type	VW 22	VW 23
Connection	G 1/4	G 3/8
Type of construction	Centrifugal-principle filter - Sintered filter element (polyethylene) Diaphragm pressure regulator - Independent of inlet pressure - Reversible Proportional oil-mist lubricator	
Input pressure p_1	max. 16 bar with plastic tank max. 20 bar with metal tank	
Input pressure p_1 with automatic draining	max. 16 bar min. 1.5 bar	
Mounting position	Vertical, drain plug at bottom	
Mounting type	Bracket	
Medium temperature Ambient temperature	max. 50 °C	
Medium temperature (metal) Ambient temperature (metal)	max. 80 °C	
Pore diameter in the filter element	40 µm	
Effective tank capacity - Filter - Oil-mist lubricator	max. 25 cm ³ max. 50 cm ³	
Condensate draining	Manual, fully automatic	
Oil grade	DIN 51524 – ISO VG 32	
Lubricator function (start of delivery)	From 50 l/min	
Weight [g]	720	

Ordering information

Type	Connection	Variants
VW	XX	X

Connection	
X = 22	G 1/4
X = 23	G 3/8
Variants	
X = S	Bowl guard
X = M	Metal bowl
Order example: VW 23 M	
Please use the suffix »A« to order automatic draining	

Description

- Block design
- **Flow direction** indicated by **arrows** on front plate

Accessories

Fixing bracket	630/1-B
Compact conn. set G 1/4	VZ 101
Tee holder for VZ 101 / VZ 102	VZ 301
Compact conn. set G 3/8	VZ 102
Comfort conn. set G 1/4	VZ 401
Comfort conn. set G 3/8	VZ 402
Plastic tank Filter	VZ 501
Plastic tank with automatic drain valve	VZ 511
Metal tank Filter	VZ 551
Metal tank with automatic drain valve	VZ 561
Automatic drain valve	655.6.900
Plastic tank Oil-mist lubr.	VZ 601
Metal tank Oil-mist lubr.	VZ 651

Materials

Part	Material
Head piece (housing)	Z 410
Spring bonnet / handwheel	PA / POM
O-rings	NBR
Diaphragms	NBR / brass
Filter element 40 µm	PE (sintered)
Condensate tank	Polycarbonate
Swirl plate	PA
Disconnecting cap	PA
Drip attachment (metering unit)	PA
Front plates	ABS

Dimensions [mm]

A	96
B	203
C	48
ØD	28
E	68
F	24
H	32
I	M 30 x 1.5
J	91
K	14.5
ØL	4.4
M	84
ØN	40
V	G 1/4

VW 22 VW 23

Main spare parts

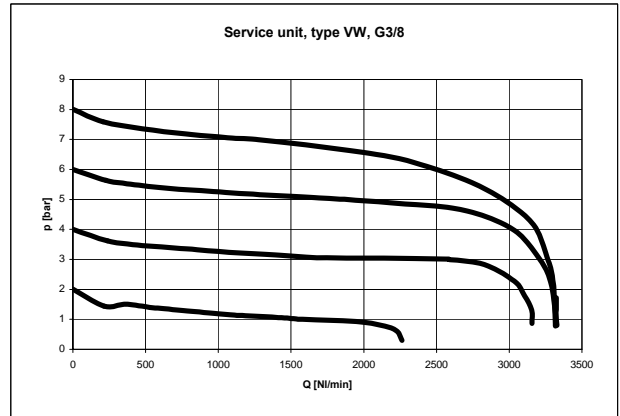
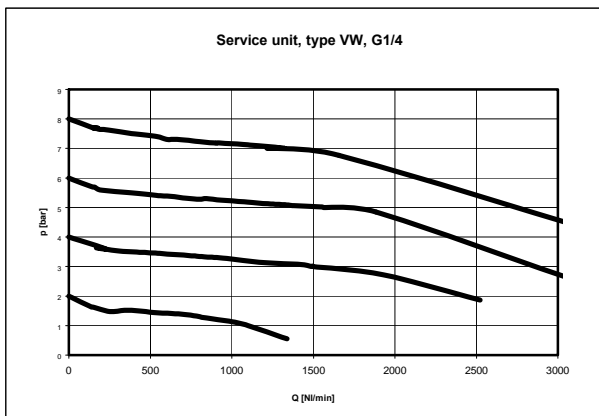
Part	Part No.
Set of wearing parts	VZ 781
Filter element 40 µm	VZ 741
Drip attachment	VZ 721
Drip attachment, metal	VZ 731

Special units

Part	
Filter element 5 µm	VZ 741/5

Flow rates

		VW 22	VW 23
Nominal flow p ₂ 6 bar / Δ 1 bar	QN [l/min]	1500	1800



Interlocking / mounting

Variobloc

Size 1 G 1/4

Fixing bracket and fixing nut	630/1-B
Fixing bracket and two screws	VZ 718
Compact connecting set	VZ 101
Compact conn. set, incl. tee holder	VZ 201
Comfort connecting set	VZ 401

Size 1 G 3/8

Fixing bracket and fixing nut	630/1-B
Fixing bracket and two screws	VZ 718
Compact connecting set	VZ 102
Compact conn. set, incl. tee holder	VZ 202
Comfort connecting set	VZ 402

Size 2 G 1/2

Fixing bracket and fixing nut	
Fixing bracket and two screws	
Compact connecting set	
Compact conn. set, incl. tee holder	
Comfort connecting set	

Size 2 G 3/4

Fixing bracket and fixing nut	
Fixing bracket and two screws	
Compact connecting set	
Compact conn. set, incl. tee holder	
Comfort connecting set	

