



### 3/2-way pilot valve

Electro-pneumatic

Size 2

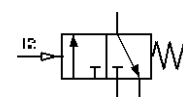
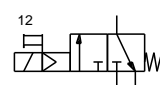
FU 963 - FU 963-AC - FU 967-115V - FU 967

G 3/8

FU 964 - FU 964-AC - FU 968-115V - FU 968

G 1/2

24V= – 24/50 – 115/50 – 230/50



(optional)

#### Description

Electro-pneumatically operated **3/2-way** solenoid valve for pressurising and relieving downstream pneumatic systems by remote control.

The valve is operated (opened) by a **continuous electrical signal**.

#### Ordering information

- The valves are delivered in single packs
- Connector socket included

#### Characteristics

| Type                                  | FU 963 - FU 963-AC - FU 967-115V - FU 967                          | FU 964 - FU 964-AC - FU 968-115V - FU 968 |
|---------------------------------------|--|---|
| Port (thread)                         | G 3/8 (optional: NPTF)   | G 1/2 (optional: NPTF)                    |
| Port (air relief)                     | G 1/2  |   |
| Type of construction – start-up valve | 3/2-way seat valve   |   |
| Medium                                | Compressed air, neutral gases                                      |   |
| Mounting position                     | Interconnected devices vertical / single devices any               |   |
| Temperature (medium / ambient)        | Max. 50 °C   |   |
| Input pressure Pin                    | 2 to 10 bar (higher pressures on request)                          |   |
| Standard voltage                      | 24 V= ; 24V/50Hz ; 115V/50Hz ; 230V/50Hz                           |   |
| Electrical power input                | DC: 1 to 2.5 W<br>AC: 3 VA   |   |
| Cyclic duty factor                    | 100%   |   |
| Nominal flow Qn                       | 4500 l/min (Pin = 6 bar, Δp = 1 bar)                               |   |
| Operation                             | Electro-pneumatic  | Optional: Pneumatic (G 1/8 female port)   |
| Electrical connection                 | Connector socket EN 175301-803, form C / ISO 15217<br>2 poles + PE |   |
| Degree of protection                  | IP65 acc. to DIN 40050   |   |
| Mounting type                         | Bracket, wall mounting   |   |

#### Materials

| Part                    | Material        |
|-------------------------|-----------------|
| Head piece              | IXEF1022®       |
| Cover                   | Schulaform®     |
| Piston                  | Brass / NBR     |
| Grooved ring            | Al              |
| Counter-pressure spring | Stainless steel |
| O-ring                  | NBR             |
| Threaded plate          | Die-cast zinc   |

#### Standards and directives

|                |   |
|----------------|---|
| 98/37/EC (PED) | Scope: Art. 3, Section 3<br>Unmarked (acc. to Annex II, Diagram 2, Art. 3, Section 3 is applicable) |
| ISO 4414       | (Pneumatic fluid power – General rules and safety requirements for systems and their components)    |

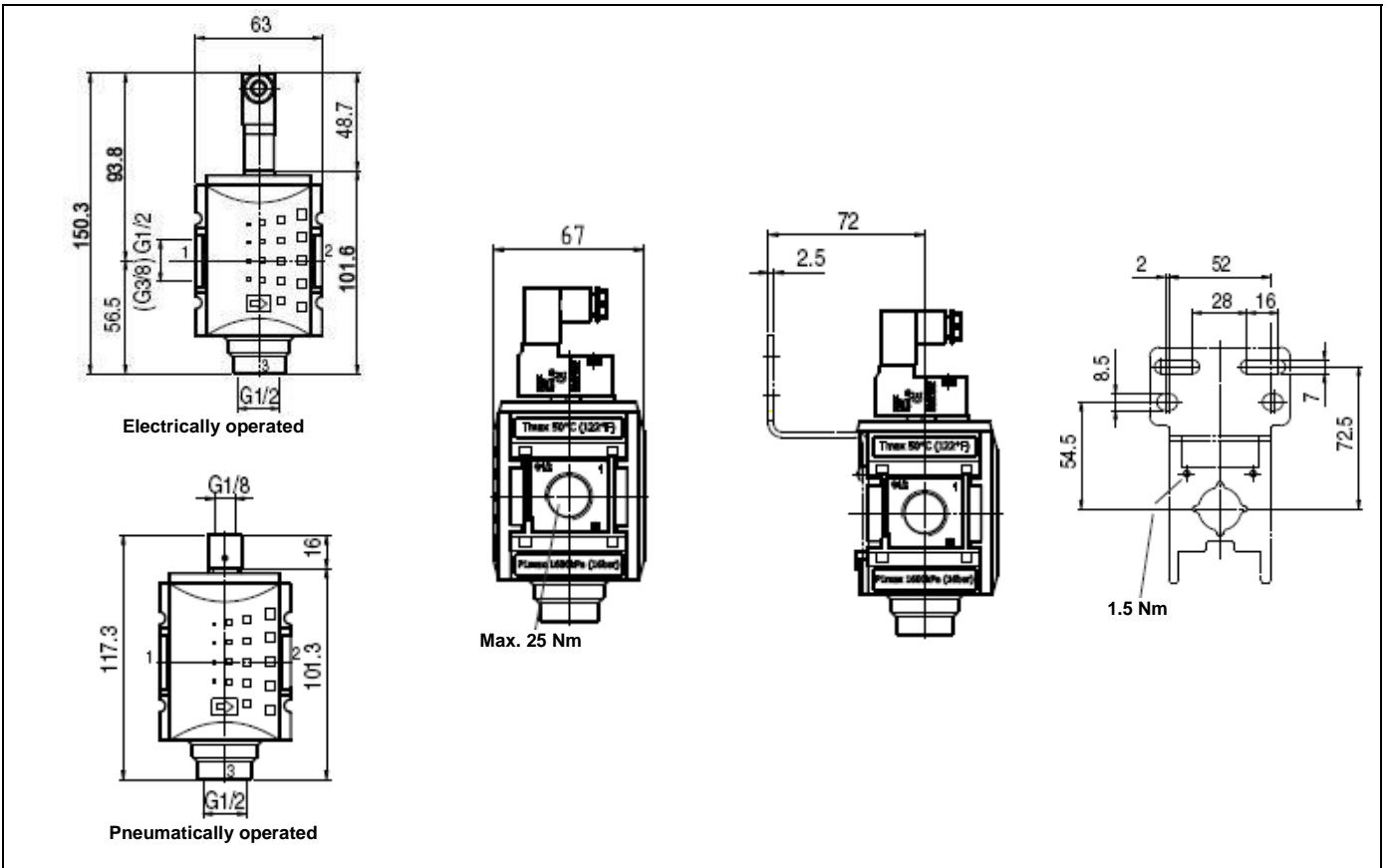
Accessories

| Designation                       | Art. No. |
|-----------------------------------|----------|
| Mounting bracket, incl. screws    | H 852    |
| Wall bracket, incl. screws        | WK 102   |
| Joiner set, incl. screws          | KP 200   |
| Silencer, sintered bronze (short) | 564-2    |
| Connector, form C                 | 1920.FU  |
| Silencer, sintered bronze         | 567-4/M  |
| Silencer, sintered bronze (short) | 564-4    |

Spare parts

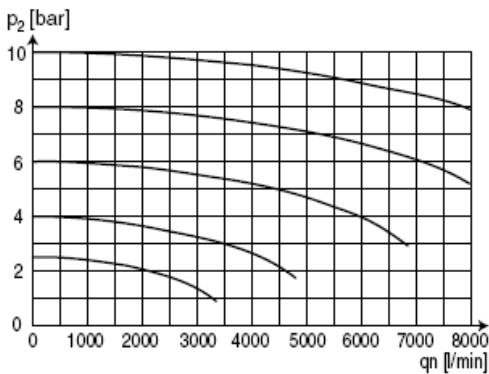
| Designation                               | Art. No.    |
|---|-------------|
| Pilot valve 24 VDC                        | 400-900-42  |
| Pilot valve 115 VAC / 50 Hz               | 400-900-115 |
| Pilot valve 230 VAC / 50 Hz               | 400-900-17  |
| Pilot valve 24 VAC / 50 Hz                | 400-900-301 |
| Wall bracket with connection thread G 3/8 | WK 102-38   |
| Wall bracket with connection thread G 1/2 | WK 102-12   |
| Wall bracket with connection thread G 3/4 | WK 102-34   |

Dimensions



Flow rates

Flow characteristic



Return exhaust

